

Martin Donlin

architectural glass artist



I am a Brighton based Architectural Glass Artist working on large scale site specific artworks, I have completed and project managed a large number of commissions in the UK, Europe and the USA. I design and make artworks for both sacred and secular buildings.

Martin Donlin

35 Princes Terrace
Brighton BN2 5JS
England
Great Britain
tel: 0044 1273 690 561
cell: 0044 7890 454 187
martin@martindonlin.com
<http://www.martindonlin.com>

BORN

1959 Hockley Essex. England UK

TRAINING

1982 - 1984 Art Foundation Course Medway College of Design UK.

1984 - 1987 HND Architectural Glass, Swansea UK.

AWARDS

2019 Fellow of the British Society of Master Glass Painters (BSMGP)

2018 Freedom of the City of London - Worshipful Company of Glaziers

2017 Coda Award - Spar-Und-Bauverein Building, Germany

2015 Coda Award - MediCo Centre, Germany

2014 Coda Award - GMP HQ, Manchester.

2010 Integrated Art Project – Royal Society of Architects, Belfast

2009 Art In Airports Award, Indianapolis, USA

2008 Public Art Award, Poole

2006 Art in Health Award, Belfast

2004 Art for Architecture Church Award, Frankfurt Germany

2001 Lord Mayors Prize, Swansea. St Mary's Church.

2001 Art in Architecture Award, Oracle, Reading.

2000 Art in Architecture Award, Munich Germany.

1999 Library Association, Public Library Building of the Year Award.

1999 Healing Arts Award. National Health Service.

1999 Art For Architecture. Public Arts.

1997 Art for Health Award. National Healthcare Trust.

1996 Arts Centre of the Year Award, Arts Council.

1996 British Gas. Art For Architecture Award.

1993 Art For Architecture Award. Royal Society of Arts.

1988 Crafts Council Setting Up Grant.

1987 Sir Arthur Evans Travel Scholarship, The Worshipful Company of Glaziers.

1987 Howard Martin Design Award.

SELECTED EXHIBITIONS

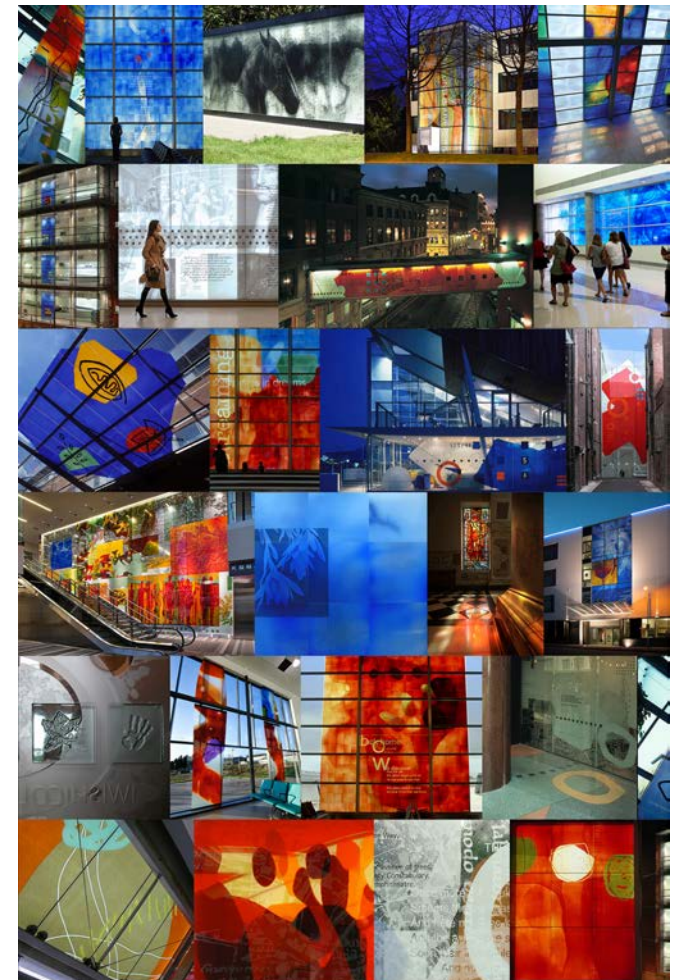
2019 Searching for the light of the world - Chartres Cathedral, France.

2018 Glass and Light - Glynn Vivian Art Gallery, Swansea, UK

2007 Constructing the light – Mexico City

2006 Architectural Art Glass – Japan

2006 Art in Architecture – Germany



Martin Donlin

architectural glass artist

SELECTED RECENT COMMISSIONS

2018 Scottsdale Airport AZ, USA - Main entrance and interior glass walls.

2018 HCMC Minneapolis, USA - Suspended glass sculpture.

2018 Immaculate Conception RC Church, Southampton, UK. Altar Wall Hanging.

2017 The Halo Project, London - 100 sq. metres LED Light boxes.

2017 Villa in Kazakhstan - Large outdoor Slumped glass screen.

2016 Washington Metro - McLean Metro Station USA - 80 sq. metre glass windows.

2016 Jesuit College, Detroit, USA - Stained glass window

2016 Grande Cheese Company, Minnesota, USA - Glass light box.

2016 Sports Centre Didcot - enamelled glass scheme 40 sq. metres

2016 Paderborn Germany, Housing Development main entrance glass wall, 250 sq. metres.

2016 55 St. James's London - Office main entrance & reception etched glass scheme.

2015 American Airlines, Dallas USA - Lightbox wall in main reception.

2014 Raleigh Durham Airport, North Carolina, USA - 112 sq. metres glass wall

2014 San Antonio Hospital USA - 30 sq. metres glass bolted to interior wall

2014 St Clare's College Oxford - Light box scheme 20 sq. metres

2013 St Wilfrids Hospice, Eastbourne - Stained glass window 5 sq. metres

2013 Sacred Heart RC Church Waterlooville - 32 sq. metres glass scheme

2013 New Apostolic Church, Frankfurt Germany - Stained Glass Windows 24 sq. metres

2013 Tosei General Hospital, Japan - wall mounted glass panels

2013 Coleridge College Cambridge - 20 sq. metre windows

2013 MediCo Centre, Germany - 200 sq. metre scheme

2013 Dula-Werke office complex, Germany - 12 sq. metre glass window scheme

2013 Dallas, Lovefield Airport USA - 50 sq. metres stained glass window

2012 Michigan State University USA - 45 sq. metres Stained glass windows

2012 Selwood Manor Opera House, Bath UK - 20 sq. metres glass scheme

2012 Manchester Police Force, Manchester UK - 250 sq. metres glass scheme

2012 Alton RC Church, Hampshire, UK - Glass Lanterns for altar and Baptismal font

2012 Belfast City Hall - Celtic myths & Legends stained glass window

2011 Aberdeen Dental School - Glass screens

2011 Sacred Heart RC Church Waterlooville, Hampshire UK - Stained glass altar window

2011 Southampton - Cenotaph War Memorial - 8 glass walls

2011 Jersey, Channel Islands - 50 sq. metre glass scheme

2011 Munich-Nymphenburg, Parish Centre, Germany. Stained glass screens.

2011 Melsungen Church, Germany. Stained glass windows.

2010 Pleasanton Art Centre, San Francisco, USA Glass towers

2010 Denver Justice Centre, USA. Glass Canopy.

2010 Bury Police Station - Manchester Screens.

2010 Wellington Station, Chicago USA. Glass entrance

2010 Hetton & Silksworth Swimming Pools, Glass entrance facades

2010 Poole Police Station – Dorset, Glass screens

2010 Divine Mercy RC School, Manchester – Stained Glass Entrance

2009 Basingstoke Hospital, Glass walls and Windows

2009 Portsmouth Hospital, Glass wall panels.

Martin Donlin

architectural glass artist

SELECTED COMMISSIONS CONTINUED

2009 No. 1 Southampton Row, London – Glass Entrance Canopy

2009 Rhondda Hospital – South Wales

2009 New Indianapolis Airport – Indiana USA

2009 No. 1 Heddon Street, London

2009 Knockbrea Healthcare Centre – Belfast. Enamelled glass windows

2009 International House – London. Stained glass scheme

2008 Poole Fire Station – Dorset. Enamelled glass scheme

2008 Genesis Centre – Manchester. Stained glass windows and wall plaques

2008 Abingdon School Sports Complex – Oxford. Enamelled glass wall

2007 Charnel House, Spitalfields – London. Exterior glass scheme

2006 Queens Medical Centre Hospital, Nottingham. Glass scheme

2006 Hammersmith Hospital, London. Suspended stained glass scheme.

2006 Health Centre, Belfast. Stained glass scheme.

2006 Kloster, Germany. Stained glass in prayer room.

2006 Hospital Chapel, Germany. Stained glass.

2006 Hospital, Berlin. 15 light boxes in corridors.

2006 Ebbw Vale – Wales. Enamelled glass canopy.

2005 South Hill Park Arts Centre – Bracknell. Etched glass screen.

2005 Secure Unit, Bristol. Stained glass main entrance.

2005 Gosport Discovery Centre. Stained glass entrance.

2005 Durham Office and information Centre. Stained glass scheme.

2005 King Ecgberts School, Sheffield. Stained glass and mirrors.

2005 Pentecostal Church, Frankfurt. Stained glass windows.

2005 New Apostolic Church, Bondorf, Germany. Enamelled glass windows.

2004 Holywood Arches Hospital, Belfast. Stained glass scheme

2004 Brewery Lane - Bridgend, Stained glass scheme.

2003 The Bull Ring - Birmingham, Enamelled glass wall.

2003 Landmark Place - Slough, suspended glass screen.

2002 Empire Theatre - Liverpool, Enamelled glass wall.

2002 South Hill Park Arts Centre - Bracknell, Stained glass sky-light.

2001 Dryburn Hospital Durham, Enamelled glass canopy to main entrance.

2001 St Joseph's RC Church, Epsom, steel and curved glass altar screen,

2001 Southampton Football Club, Enamelled glass main entrance.

2001 Dorchester Library, Acid-etched and enamelled glass main windows.

2001 St Mary's Church, Swansea, West Window, stained glass.

MARTIN DONLIN MOVIE LINKS (approximately 90 seconds each)

<https://vimeo.com/109774463> Metamorphosis (Raleigh Durham Airport NC)

<https://vimeo.com/112591515> Overview (about 4 mins long)

<https://vimeo.com/108867627> Blueprint of Flight (Lovefield Airport Dallas)

<https://vimeo.com/108869066> Hippocrates (San Antonio)

<https://vimeo.com/107308923> The Indiana Windows (Indianapolis Airport)

MARTIN DONLIN BROCHURE:

<https://issuu.com/martindonlin/docs/martin-donlin-architectural-stained>

MARTIN DONLIN BROCHURE ECCLESIASTICAL:

<https://issuu.com/martindonlin/docs/martin-donlin-ecclesiastical>